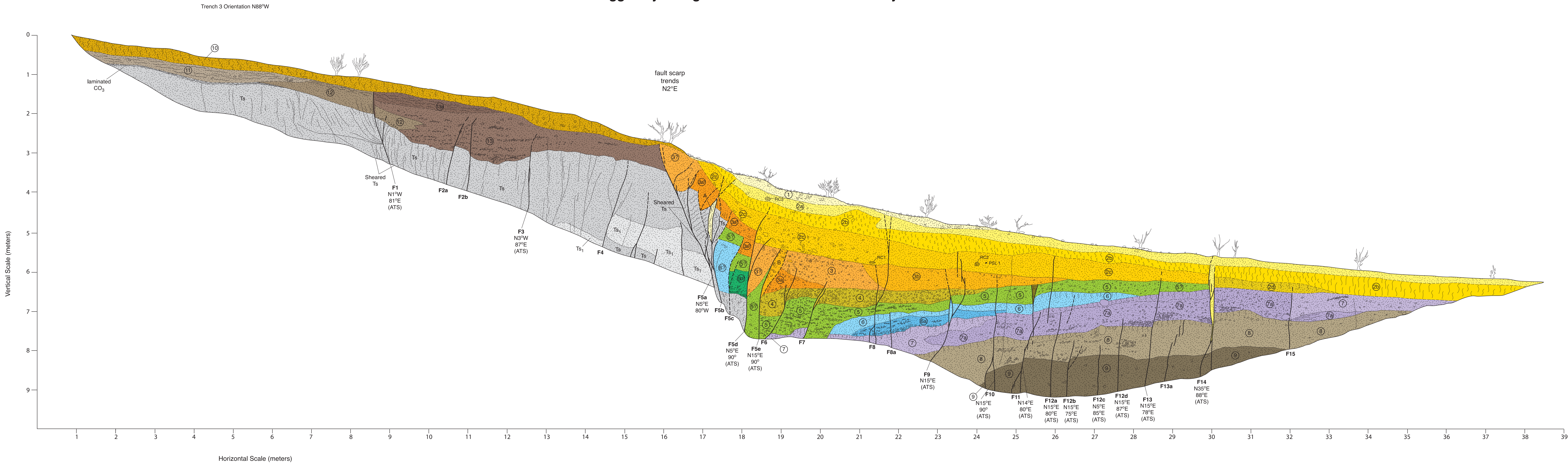


East Carson Valley Fault System
TRENCH 3
South Wall

Logged by: Craig M. dePolo and Thomas L. Sawyer

dePolo and Sawyer (2005)
Plate 4



Legend

- | | |
|--|--|
| ① Gravelly, silty, coarse to fine sand colluvium | ⑧ Gravelly coarse to fine sand colluvial and alluvial |
| ② Gravelly, clayey medium to fine sand and pebbly sandy clay colluvium | ⑨ Gravelly coarse to fine sandy colluvium and alluvium |
| ③ Gravelly coarse to fine sand colluvium | ⑩ Gravelly sandy clayey argillic horizon |
| ④ Gravelly fine sandy alluvium | ⑪ Gravelly coarse to medium sandy colluvium |
| ⑤ Gravelly medium to coarse sand alluvium | ⑫ Gravelly fine sand alluvium |
| ⑥ Fine to very fine sand with pebble gravel lenses - alluvium | ⑬ Gravelly coarse to medium sand alluvium |
| ⑦ Clayey fine to very fine sand with pebble gravel lenses - alluvium and colluvium | Ts Tertiary medium to fine sand and very fine sand with minor pebble stringers |

Key

- sands and silty sands
- gravels
- shrink-swell prismatic structure
- sheared
- Fault

A Young fissure fill/sheared area from PE1

B Pebbly sand, well stratified fissure fill

ATS Across trench strike

Radiocarbon Dates

RC1 9,766-11,232 cal BP (2 sigma)