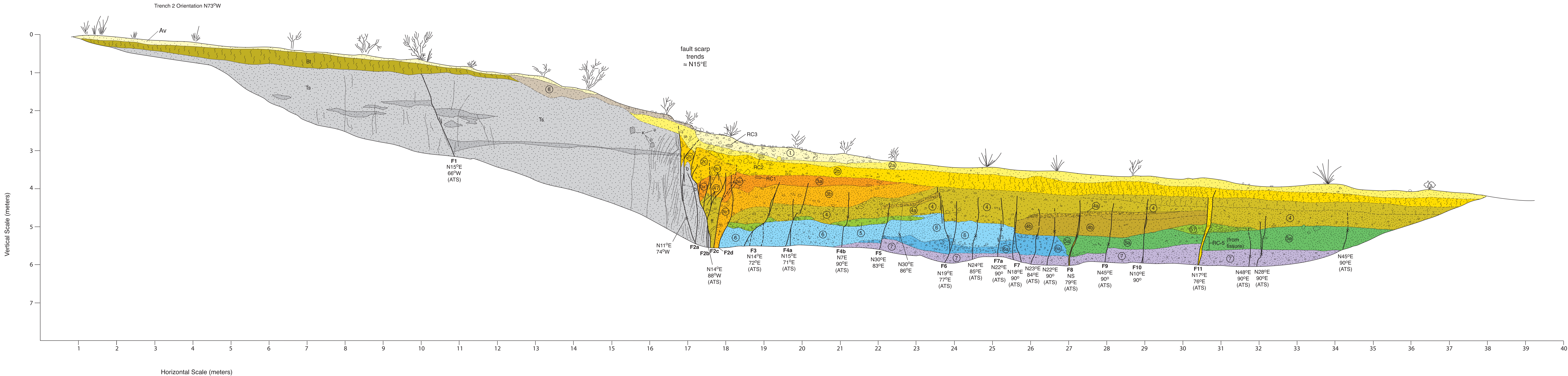


East Carson Valley Fault System
TRENCH 2
South Wall

Logged by: Craig M. dePolo and Thomas L. Sawyer

dePolo and Sawyer (2005)
Plate 3



Legend			
①	Cobbly, pebbly, silty, clayey, fine and very fine sandy colluvium	⑥a	Gravelly, clayey fine sand colluvium and alluvium
②	Cobbly, pebbly, silty, clayey, fine sandy colluvium	⑥	Gravelly, clayey fine sand and sandy gravel with cobbles
③	Cobbly, gravelly, clayey coarse to very fine sand colluvium	⑦	Gravelly, medium to fine colluvium and alluvium
④	Gravelly, clayey fine to very fine sand colluvium	Ts	Medium to very fine sand with minor pebble stringers
⑤	Clayey, sandy gravel and gravelly clayey sand colluvium		

Key	
	sands and silty sands
	gravels
	shrink-swell prismatic structure
	sheared
	Fault, dashed where inferred (cross where measurement was made)

ff - generic fissure fill
b - breccia zone; pulverized Ts
K - krotovina
ATS - Across Trench Strike

Radiocarbon Dates			
RC1	3372-4179	cal BP (2 sigma)	
RC3	520-726	cal BP (2 sigma)	
RC4	678-921	cal BP (2 sigma)	[from N.wall in same stratigraphic position as RC2]