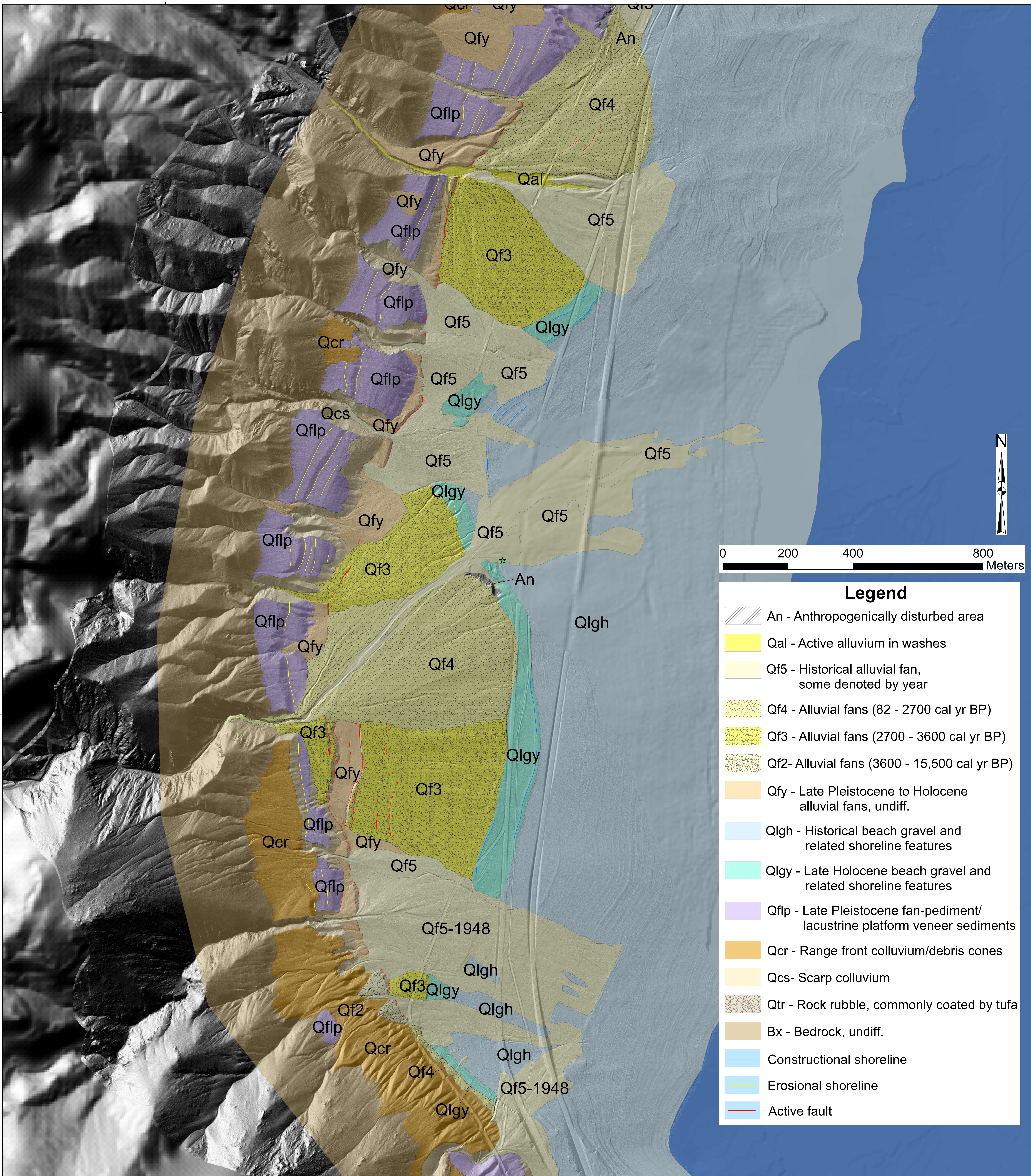


38.75° N

118.78° W

118.77° W

38.73° N



## Legend

- An - Anthropogenically disturbed area
- Qal - Active alluvium in washes
- Qf5 - Historical alluvial fan, some denoted by year
- Qf4 - Alluvial fans (82 - 2700 cal yr BP)
- Qf3 - Alluvial fans (2700 - 3600 cal yr BP)
- Qf2 - Alluvial fans (3600 - 15,500 cal yr BP)
- Qfy - Late Pleistocene to Holocene alluvial fans, undiff.
- Qlgh - Historical beach gravel and related shoreline features
- Qlgy - Late Holocene beach gravel and related shoreline features
- Qflp - Late Pleistocene fan-pediment/lacustrine platform veneer sediments
- Qcr - Range front colluvium/debris cones
- Qcs - Scarp colluvium
- Qtr - Rock rubble, commonly coated by tufa
- Bx - Bedrock, undiff.
- Constructional shoreline
- Erosional shoreline
- Active fault